



Neuro-Innovation Academy
Powered by STEAM Academy

THE NEURO-INNOVATION ACADEMY CLINICAL PROSPECTUS

Powered by STEAM Academy | Summer 2026

Program Dates: July 6, 2026 - July 30, 2026 (4 Weeks)

Ages: Incoming Kindergarten – 5th Grade

Format: Half-Day — AM or PM



WHAT IS UFLI? THE GOLD STANDARD OF LITERACY

UFLI is a high-intensity clinical framework built on the Science of Reading. Developed by world-leading researchers at the University of Florida Literacy Institute, it's not a curriculum—it focuses on acquisition, not exposure. UFLI ensures no child ever has to guess at a word again.

Science-Based

Built on proven research from the Science of Reading methodology.

No More Guessing

Children learn to decode every word with confidence and accuracy.



THE SCIENCE: HOW WE REWIRE THE BRAIN

Our Multi-Sensory Loop approach simultaneously engages seeing, hearing, articulating, and writing graphemes and phonemes—creating a "neural superhighway" connecting auditory and visual brain centers.



Multi-Sensory Loop

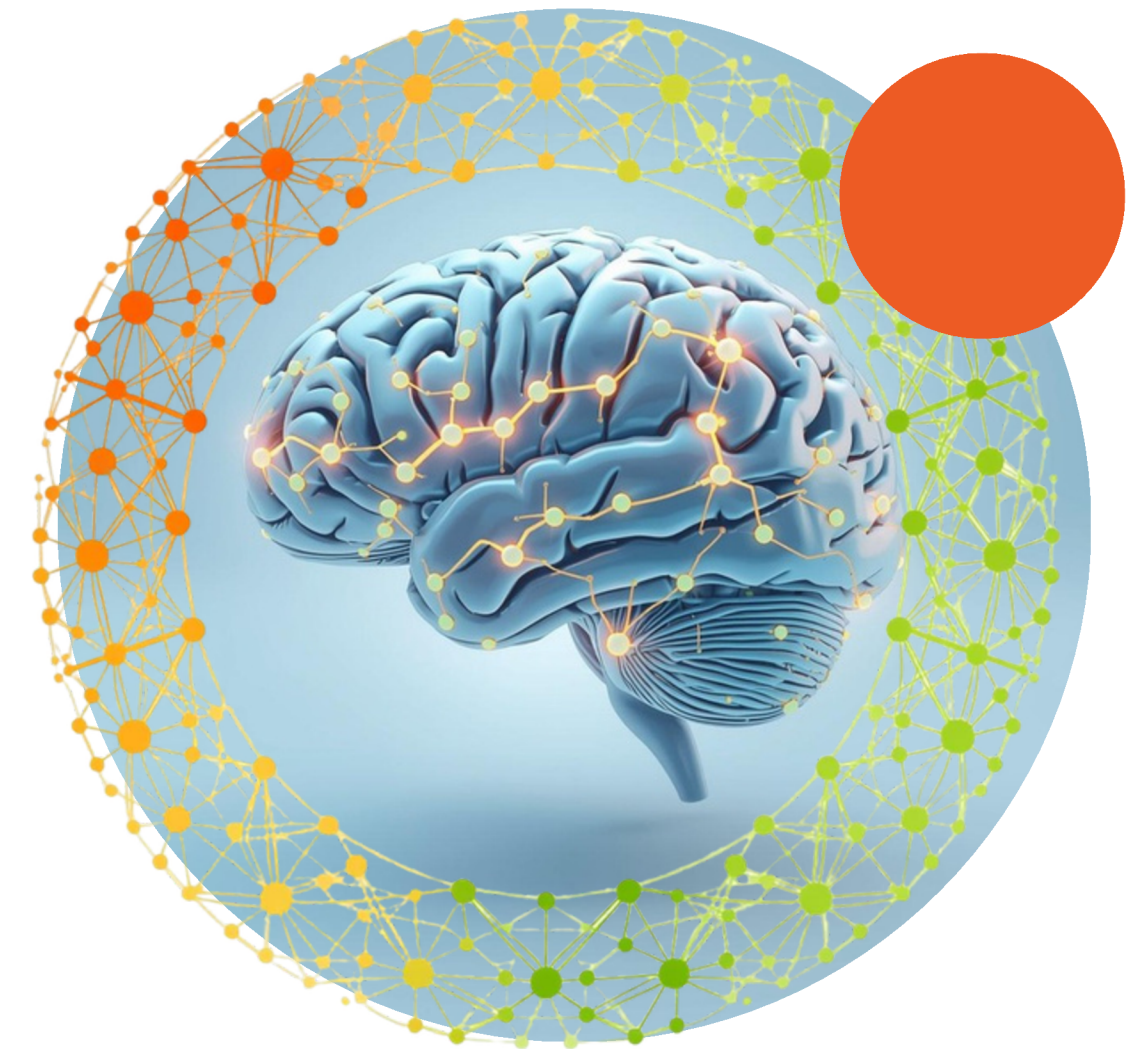
Simultaneously see, hear, articulate, and write sounds.

Neural Superhighway

Connects auditory and visual brain centers permanently.

Brain Rewiring

Creates lasting pathways for automatic reading.





ENDING THE GUESSING HABIT WITH SYNTHETIC PHONICS

Many children develop a "guessing habit" using Three-Cueing—relying on pictures, context, or first letters instead of truly reading. UFLI breaks this cycle with Synthetic Phonics, teaching children to decode any word confidently.

The Problem: Three-Cueing

Guessing from pictures, context, or partial letter cues.

The Solution: Synthetic Phonics

Systematic blending of sounds to decode any word.

The Result: True Decoding

Children read with confidence, never guessing again.



ENCODING VS. DECODING: MASTERING THE CODE

At Neuro-Innovation Academy, we teach children to decode (read) and encode (spell) simultaneously. By mastering the English code from both directions, students achieve 100% orthographic mapping—words permanently stored in memory.

Decoding

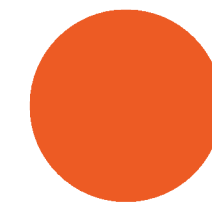
Translating written symbols into spoken language.

Encoding

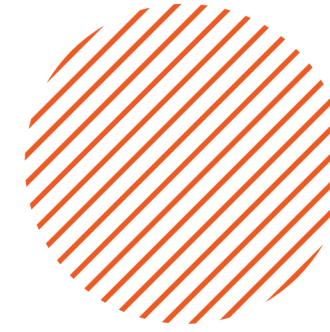
Converting spoken words into written symbols.

Orthographic Mapping

Permanent storage of words in long-term memory.



WHO IS THIS DESIGNED FOR?



The Neuro-Innovation Academy serves three distinct reader profiles, each with a tailored clinical pathway designed to meet them exactly where they are in their literacy journey.

Emerging Reader (Level A)

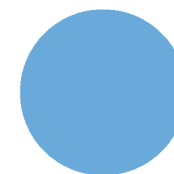
Incoming K-1st graders solidifying the Alphabetic Principle.

Stalled Reader (Level B)

2nd-3rd graders plateaued on vowel teams and blending.

Remediation Specialist (Level C)

3rd-5th graders struggling with multisyllabic words and fluency.



WHY IT WORKS: THE EFFICACY OF UFLI



UFLI's success is built on research-proven principles from the Science of Reading. Every element of our clinical approach is designed to maximize learning outcomes and ensure lasting literacy gains for every child.



Explicit Instruction

60% of children need explicit phonics instruction; 100% benefit from it.

Cumulative Mastery

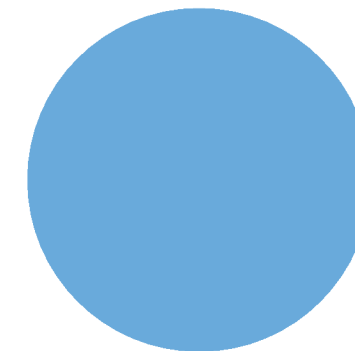
Daily building blocks with no progression without mastery.

Immediate Feedback

8:1 clinician-to-student ratio ensures real-time sound correction.

Zero Fluff Approach

Clinical precision focused solely on measurable outcomes.



THE ELITE CLINICAL TEAM

Our literacy specialists aren't camp counselors—they're certified UFLI clinicians rigorously trained through the University of Florida Literacy Institute, dedicated to transforming your child's reading journey.

Certified UFLI Specialists

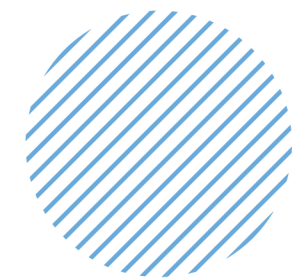
Credentialed experts in the Science of Reading.

Rigorous Clinical Training

University of Florida Literacy Institute certified.

Dedicated to Student Success

Personalized attention with 8:1 student ratios.



DATA-DRIVEN PROGRESS MONITORING



We track every milestone with precision. Using validated Progress Monitoring tools, we measure WCPM (Words Correct Per Minute) and Accuracy Mastery to ensure your child's growth is visible and measurable.

Weekly Data Reports

Detailed progress reports delivered every Thursday.

WCPM & Accuracy Tracking

Words Correct Per Minute and mastery metrics.

Transparent Results

Parents see exactly how their child improves.



THE INVESTMENT IN THEIR FUTURE

Investing in your child's literacy foundation is one of the most impactful decisions you can make. Our clinical programs are designed to deliver measurable, lasting results that set children up for lifelong reading success.

Linguistic Intensive

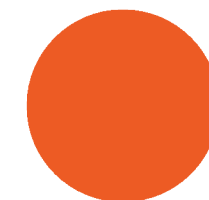
\$425/week — Focused clinical phonics instruction sessions.

Commuter Bundle

\$675/week — Full day including Fusion Lab STEM activities.

Neuro-Literacy Survival Kit

\$60 one time fee - Includes: Magnetic Grapheme Tiles, Tactile Blending Board, and UFLI Decodable Success Binder



JOIN THE 0.1% ON JUNE 20TH

Take the first step toward transforming your child's reading future. Our FREE Screening Day offers a complete diagnostic assessment, gap identification, and personalized plan building for your child's literacy journey.



FREE Screening Day

Complete diagnostic assessment and gap identification.

Clinical Snapshot

Book your 15-minute session to start the journey.

Expert Insight

"UFLI is the brain's operating system."





Neuro-Innovation Academy
Powered by STEAM Academy

THANK YOU FOR CONSIDERING US

Ready to unlock your child's reading potential?
Let's connect.

[Schedule Your Screening](#)

contact@steameducate.com

